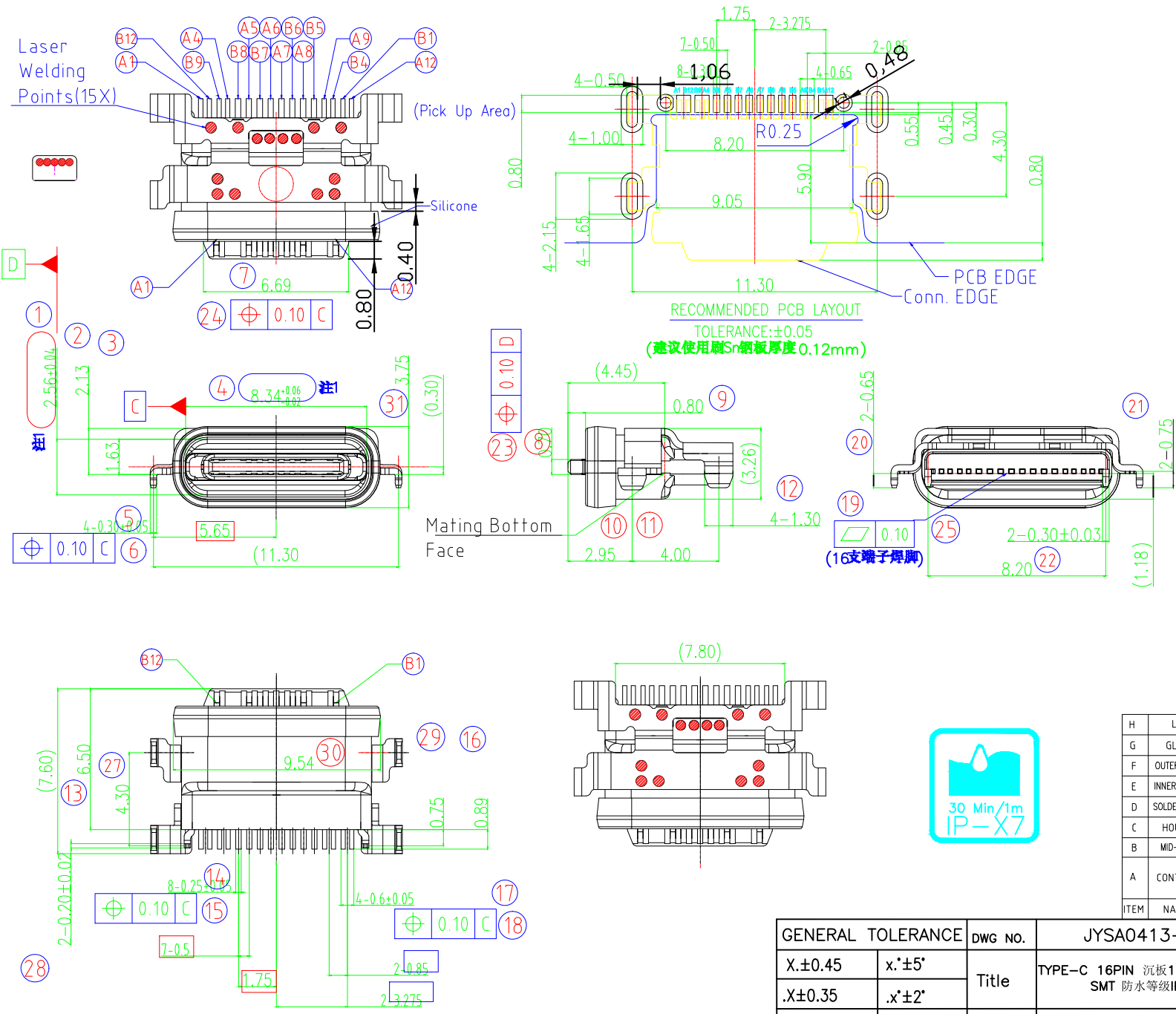


REV.	ECN.NO.	MODIFY.CONTENT	DATE
A		NEW	2019/11/25



NOTES:

- MATERIAL SPECIFICATION:
 - HOUSING: High-Temp Plastics, UL94V-0, Color: Black
 - CONTACTS: Copper Alloy T=0.25mm.
 - OUTER SHELL: Stainless Steel, T=0.30mm.
 - INNER SHELL: Stainless Steel, T=0.20mm.
 - MID-PLATE: Stainless Steel, T=0.20mm.
 - SOLDER-PLATE: Stainless Steel, T=0.10mm.
- PLATING SPECIFICATION:
 - CONTACTS:
 - NI UNDERPLATED OVER ALL;
 - Gold Plated On Contact Area;
 - Gold Flash Plated On Solder Area.
 - SHELL:
 - NI UNDERPLATED OVER ALL;
 - Gold Flash Plated ON Solder Leg.
- RoHS AND HF COMPLIANT.
- MECHANICAL PERFORMANCE:
 - MATING FORCE: 6~20N (Initial); 5~20N (After)
 - UNMATING FORCE: 8~20N (Initial); 6~20N (After)
 - DURABILITY: 10000 CYCLES.
- ELECTRICAL PERFORMANCE:
 - CURRENT RATING: 3A; VOLTAGE RATING: 5.0V
 - LLCR:
 - VBUS & GND PINS: 40mN/PIN MAX.;
 - OTHERS PINS: 40mN/PIN MAX.;
 - LLCR MAX. CHANGE OF ALL PINS: 10mN
 - INSULATION RESISTANCE: 100MΩ MIN.
 - DIELECTRIC WITHSTANDING VOLTAGE:
 - 100V AC FOR 1 MINUTE.
- ENVIRONMENTAL PERFORMANCE:
 - OPERATING TEMPERATURE: -20℃~+85℃.
- RECOMMENDED PROCESS:
 - THE PEAK TEMPERATURE ON THE BOARD SHALL MAINTAIN 10±1 SECONDS AT 260±5℃.

Pin Assignments

ITEM	NAME	Q'TY	MATERIAC	FINISH
H	LIM	1	SILICONE	UL94V-0, BLACK
G	GLUE	1	SILICONE	UL94V-0
F	OUTER SHELL	1	Stainless Steel, T=0.30	OVER ALL: 50u" Min Ni UNDERPLATED SOLDER TAIL: G/F Au PLATED
E	INNER SHELL	1	Stainless Steel, T=0.20	CLEAN
D	SOLDER-PLATE	1	Stainless Steel, T=0.10	CLEAN
C	HOUSING	1	High-Temp Plastics	UL94V-0, Color: Black.
B	MID-PLATE	1	Stainless Steel, T=0.20	OVER ALL: 50u" Min Ni PLATED
A	CONTACTS	16	Copper Alloy T=0.15mm	CONTACT AREA: 1-30u" Au Min SOLDER TAIL: G/FAu OVER ALL: 50u" Ni UNDERPLATED

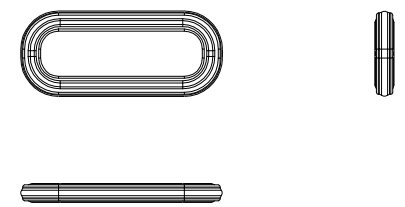
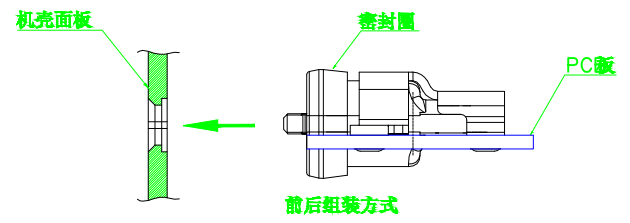


注1: 表示CP尺寸

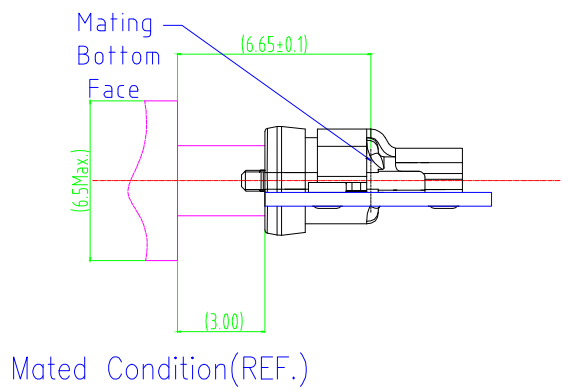
GENERAL TOLERANCE		DWG NO.	JYSA0413-02	APPD:	WIND	Scale	1:1
X.±0.45	x.'±5'	Title	TYPE-C 16PIN 沉板1.18 四脚插板 SMT 防水等级IPX7	CHKD:		UNIT	mm
.X±0.35	.x'±2'			DR:			
.XX±0.25	.xx'±1'	Part NO.	JYS-USB118-092	Date	2019/11/25		
.XXX±0.15	.xxx'±0.5'			JYSCONN Shenzhen			
SHEET	1/3	JYSCONN Electronics Co., LTD.					

REV.	ECN.NO.	MODIFY.CONTENT	DATE
A		NEW	2019/11/25

建议密封方式

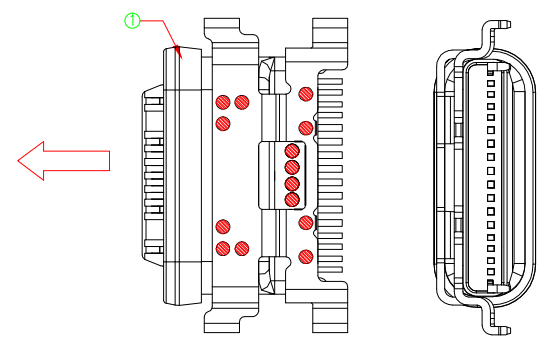
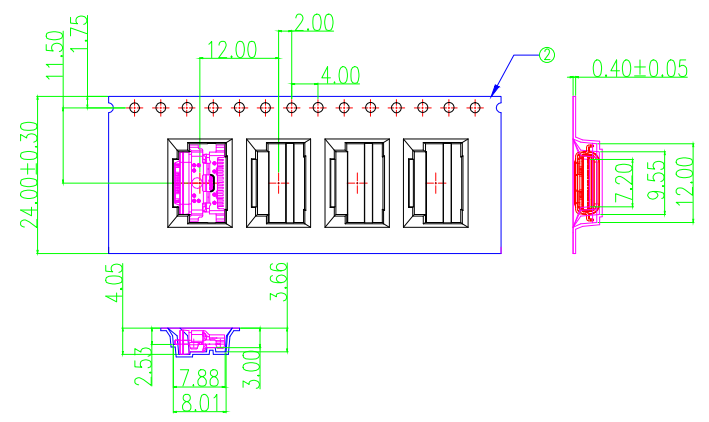


防水圈材质 (硅橡胶)

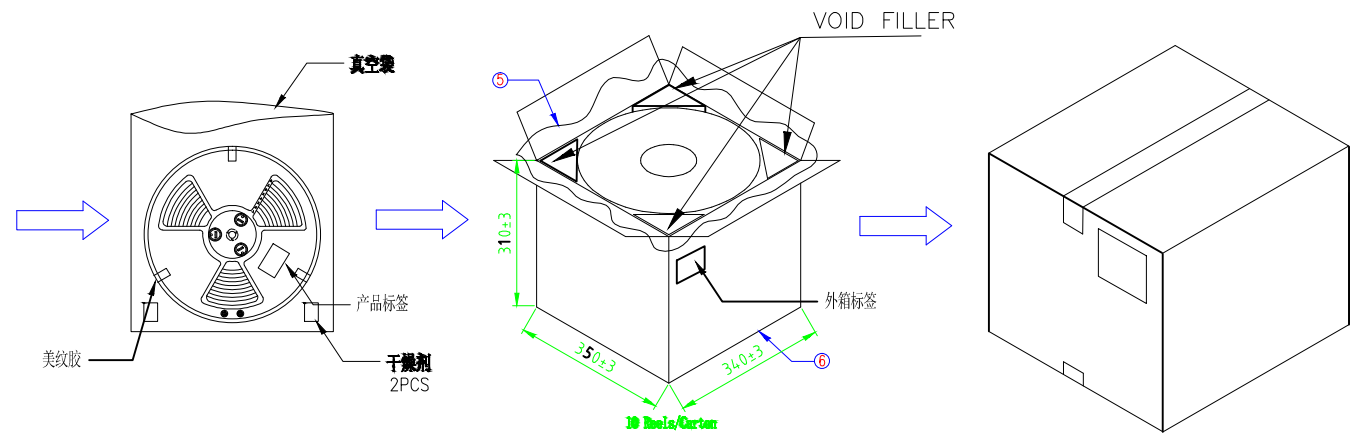
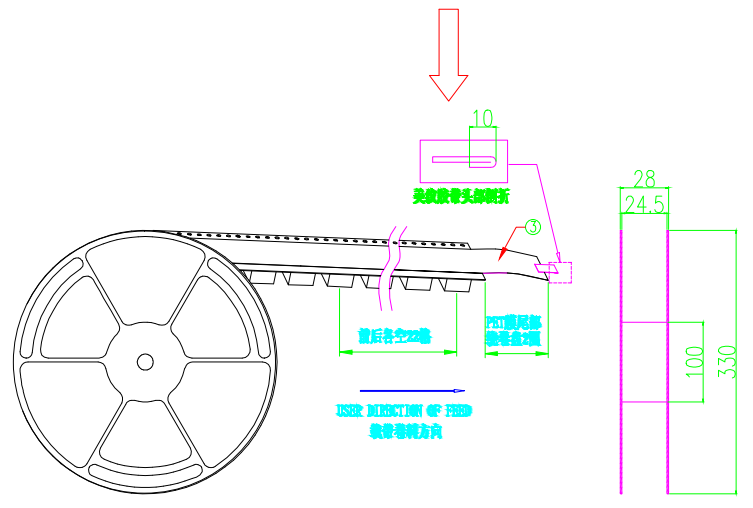


GENERAL TOLERANCE		DWG NO.	JYSA0413-02	APPD:	WIND	Scale	1:1
X.±0.45	x.±5°	Title	TYPE-C 16PIN 沉板1.18 四脚插板 SMT 防水等级IPX7	CHKD:		UNIT	mm
.X±0.35	.x'±2°			DR:			
.XX±0.25	.xx'±1°	Part NO.	JYS-USB118-092	Date	2019/11/25		
.XXX±0.15	.xxx'±0.5°			Shenzhen JYSCONN Electronics Co., LTD.			
SHEET	2/3						

REV.	ECN.NO.	MODIFY.CONTENT	DATE
A		NEW	2019/11/25



Notes:
 1.Quantity/Reel:1500pcs/Reel
 数量/卷:1500 pcs/卷
 Quantity/OuterCarton:1500*10=15000pcs
 数量/外箱:1500*10=15000pcs
 2.Weight:
 N.W±
 净重毛重:12.6±0.5kg
 3.Free s In the Front Carrier And
 Free pcs Products In the End Carrier.
 载带前后各空2格.



⑥	Outer Carton	1	K=K	34*34*30cm?	90001
⑤	PE Beg	1	PE	(400+250)x800x0.06mm	92003
④	Paper Reel	10	White paper Plate	φ330mm	P-0001-091
③	Cover Tape	18.202m	PET	t=0.06mm,W=21.3mm	96001
②	Carrier Tape	16.128m	Transparent PET	t=0.40mm	P-0001-093
①	Product	1500			LS-U323104-182
NO.	PART NAME	Q'TY	MATERIAL	REMARKS	PART NO.

GENERAL TOLERANCE		DWG NO.	JYSA0413-02	APPD:	WIND	Scale	1:1
X.±0.45	x.'±5'	Title	TYPE-C 16PIN 沉板1.18 四脚插板 SMT 防水等级IPX7 包装图	CHKD:		UNIT	mm
.X±0.35	.x'±2'			DR:			
.XX±0.25	.xx'±1'	Part NO.	JYS-USB118-092	Date	2019/11/25		
.XXX±0.15	.xxx'±0.5'						
SHEET	3/3			Shenzhen JYSCONN Electronics Co., LTD.			